

REPACKAGING MONORAIL WATERROWER: RAILS

PREP WHAT YOU'LL NEED...

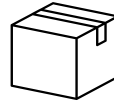
Foam or Bubble Wrap



Packing Tape



*Shipping Boxes



Use original packaging or contact customer service to reorder at rent@waterrower.com or call (401) 247-7742 and ask for the rental department.

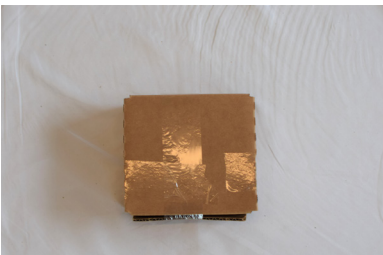
PREP SHIPPING BOXES...



Monorail Box



Rail Insert



Cardboard Spacer (1)



Cardboard Spacer (2)

STEP 1

Prep the rail insert for repackaging. If your rail insert is already assembled from shipping, skip ahead to Step 2.

Use the highlighted photo to identify the sections of the rail insert referenced throughout the assembly process.

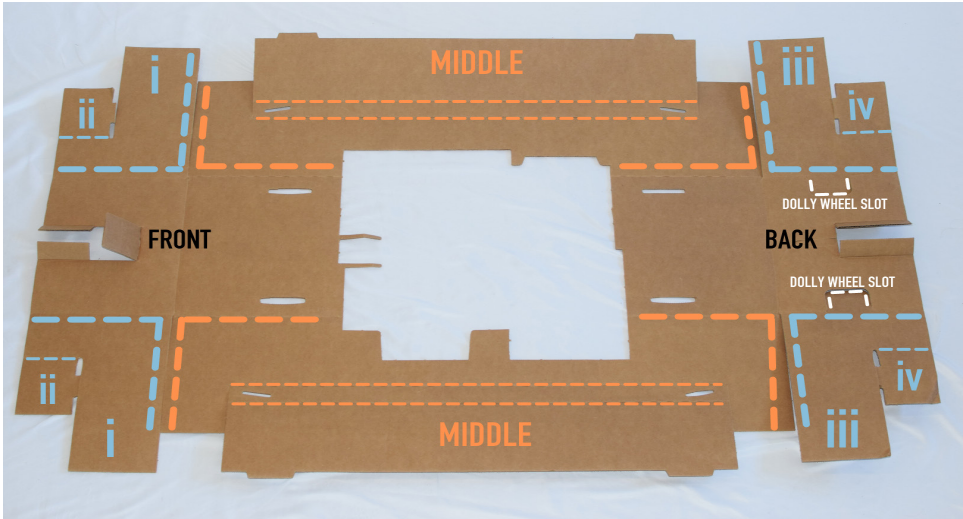
(A) Lay the rail insert flat on the ground.

(B) Fold the middle cardboard of the rail insert inward on the dotted lines (Highlighted in orange).

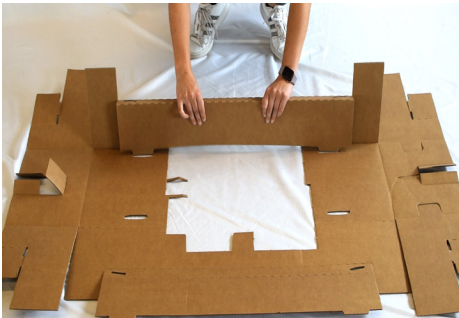
(C) Fold the side sections of the rail insert (i, ii, iii, iv) on the dotted lines (highlighted in blue).

Please Note: All sections of the cardboard should be folding inward. Double check your cardboard is not upside down before proceeding further.

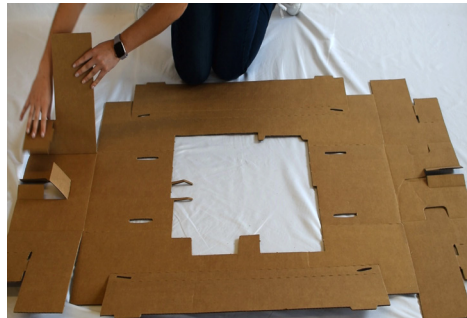
A



B



C



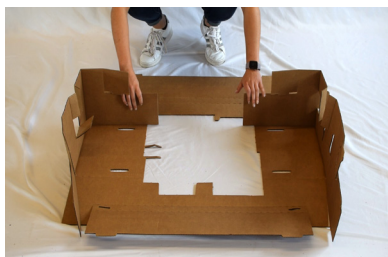
STEP 2

- (A)** Fold up section (i) and (iii) to be perpendicular with the ground.
- (B)** Fold section (i) and (iii) inward towards each other and place onto the crease in the middle of the cardboard. Section (i) and (iii) should now be standing upright.
- (C)** Fold the middle section of the cardboard over (i) and (iii).
- (D)** Make sure (i) and (iii) are fully pushed back against the middle cardboard. When looking through the slot on the top of the middle cardboard, (i) and (iii) should NOT be visible.
- (E)** Take section (ii) and (iv) and insert into the slots located on top of the middle cardboard.
- (F)** Repeat these steps for the other side.

A



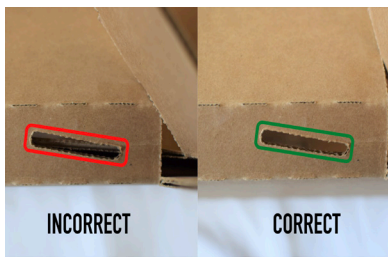
B



C



D



E



F



STEP 3

(A) Place the sub rail into the box underneath the middle cardboard, with the rubber feet facing upwards, dolly wheels facing each other. The wheels should be on the same side as the dolly wheel slots of the rail insert.

(B) Push the sub rail against the cardboard and fold the middle cardboard over the rail. Insert the tabs into the slots located on the bottom of the insert.

(C) Repeat these steps for the other sub rail.

(D) Sub rails in box.

A



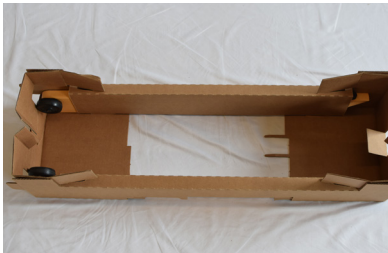
B



C



D



STEP 4

(A) Wrap the rear leg in foam or bubble wrap.

(B) Place the rear leg into the back of the rail insert between the dolly wheels of the sub rails.

A



B



STEP 5

- (A) Fold the tabs of the front and back of the rail insert inward.
- (B) Push the seat of the monorail forward, resting at the footboard bracket.
- (C) Slide the monorail into the front slot of the rail insert with the seat and footboard bracket placed on the outside of the insert. Make sure the seat is fully against the outside of the insert. This will prevent the seat from moving during shipping.
- (D) Slide the back end of the monorail into the back slot of the rail insert.

A



B



C



D



E



STEP 6

(A) Assemble the rail box by taping down the center and along the seams on one side. Place the rail box flat on the ground, with the bottom of the box against a wall.

(B) Slide the assembled monorail insert into the box.

(C) Stand the rail box upright. Take Cardboard Spacer (1) and place underneath the footboard bracket.

(D) Take Cardboard Spacer (2) and place on top of the footboard bracket.

(E) Close up the box and tape down the center and along the seams.

A



B



C



D



E

